

Population trends and policy responses

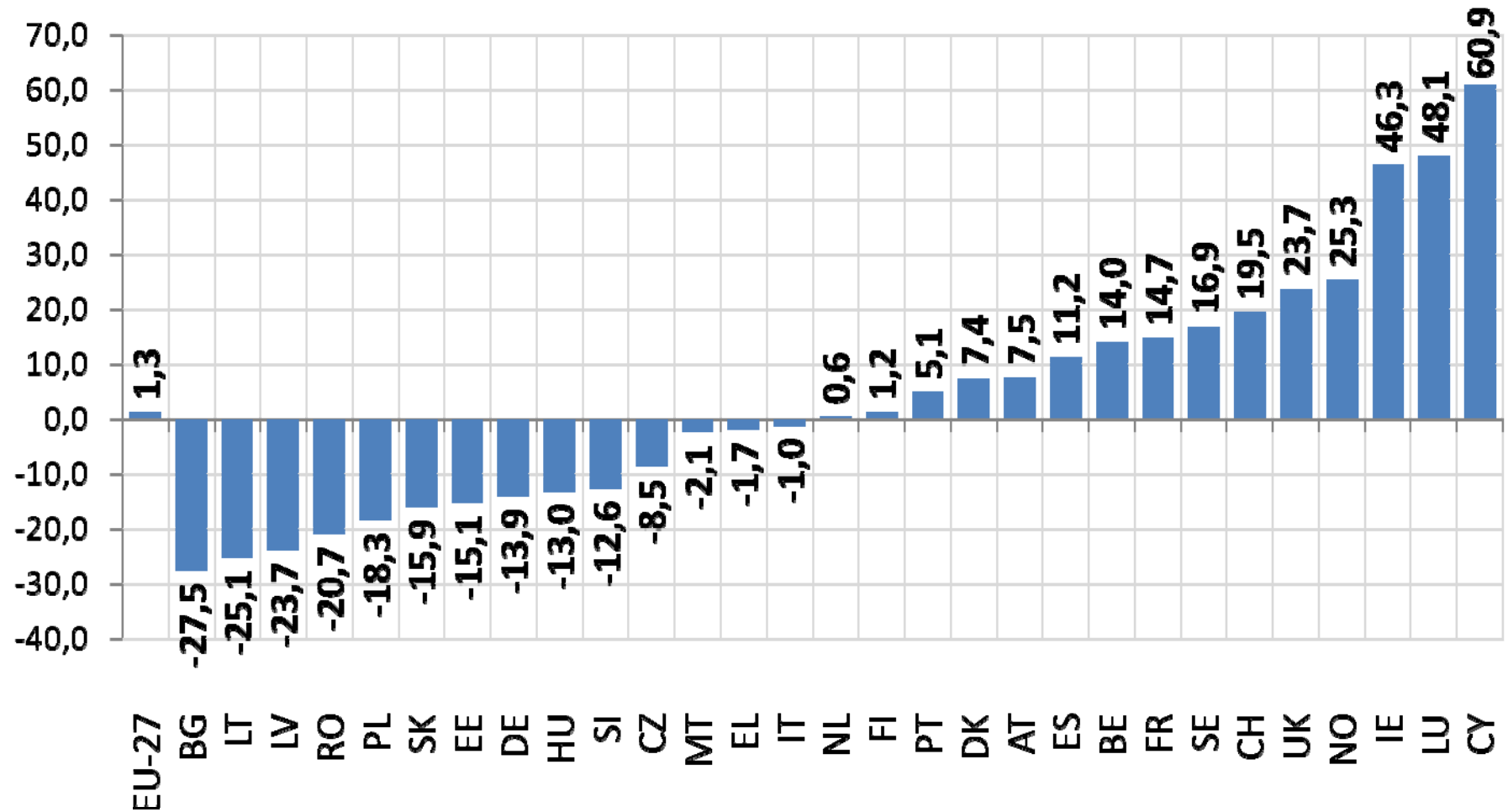
Gabriella Vukovich
EIN Summer University
Budapest, 16-18 September 2010

A few facts about European population

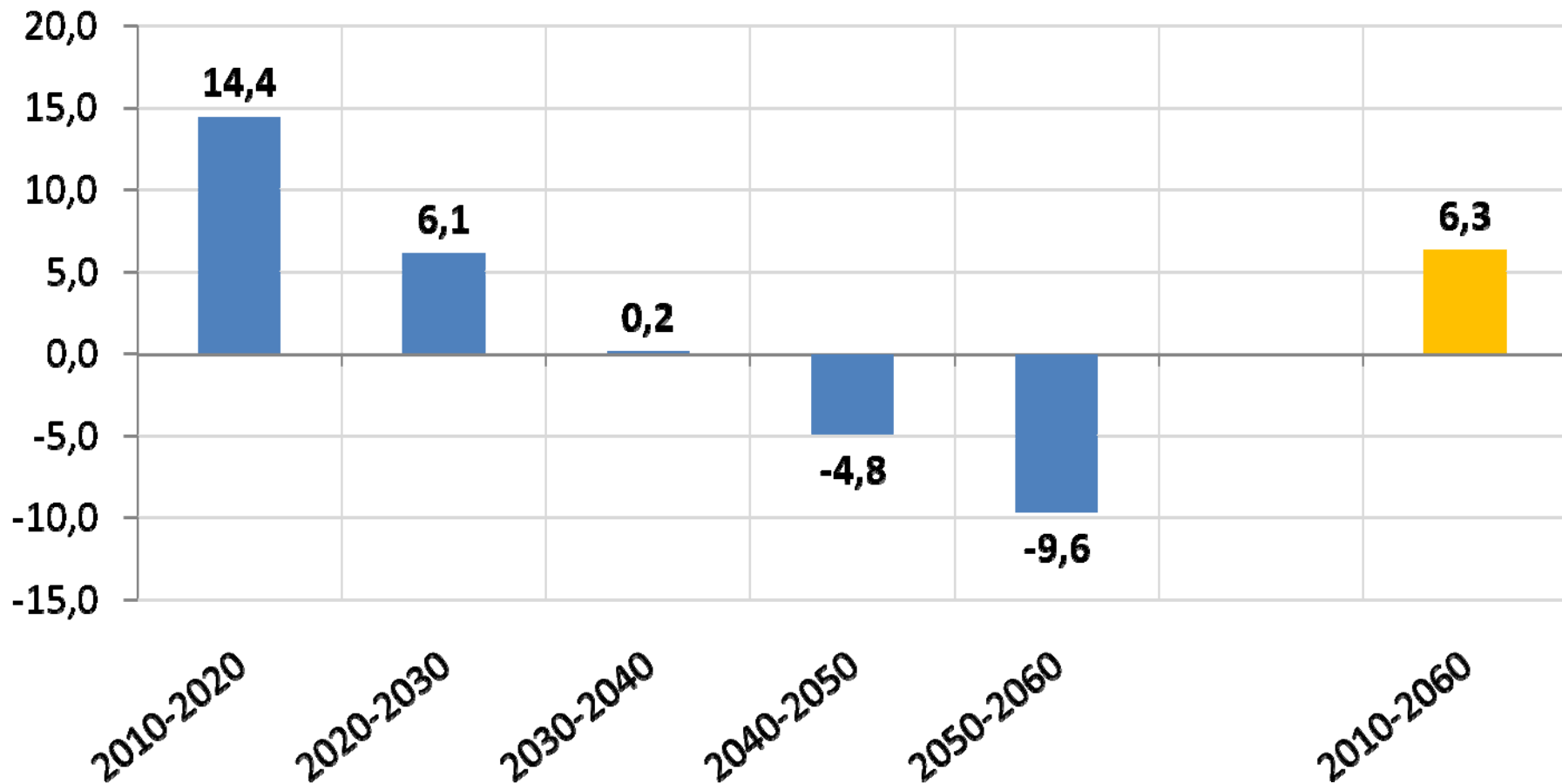
- Below replacement fertility
- Ageing population
- Zero population growth or declining population
 - In many MSs the only source of growth is immigration
 - Natural growth (in the few MSs where it is observed), is due to the still favourable age distribution but this „reserve“ will soon fade out
- In MSs where fertility is higher, ageing is slower
- Families in most MSs want more children

Projected change in the EU population (%), 2010 and 2060:

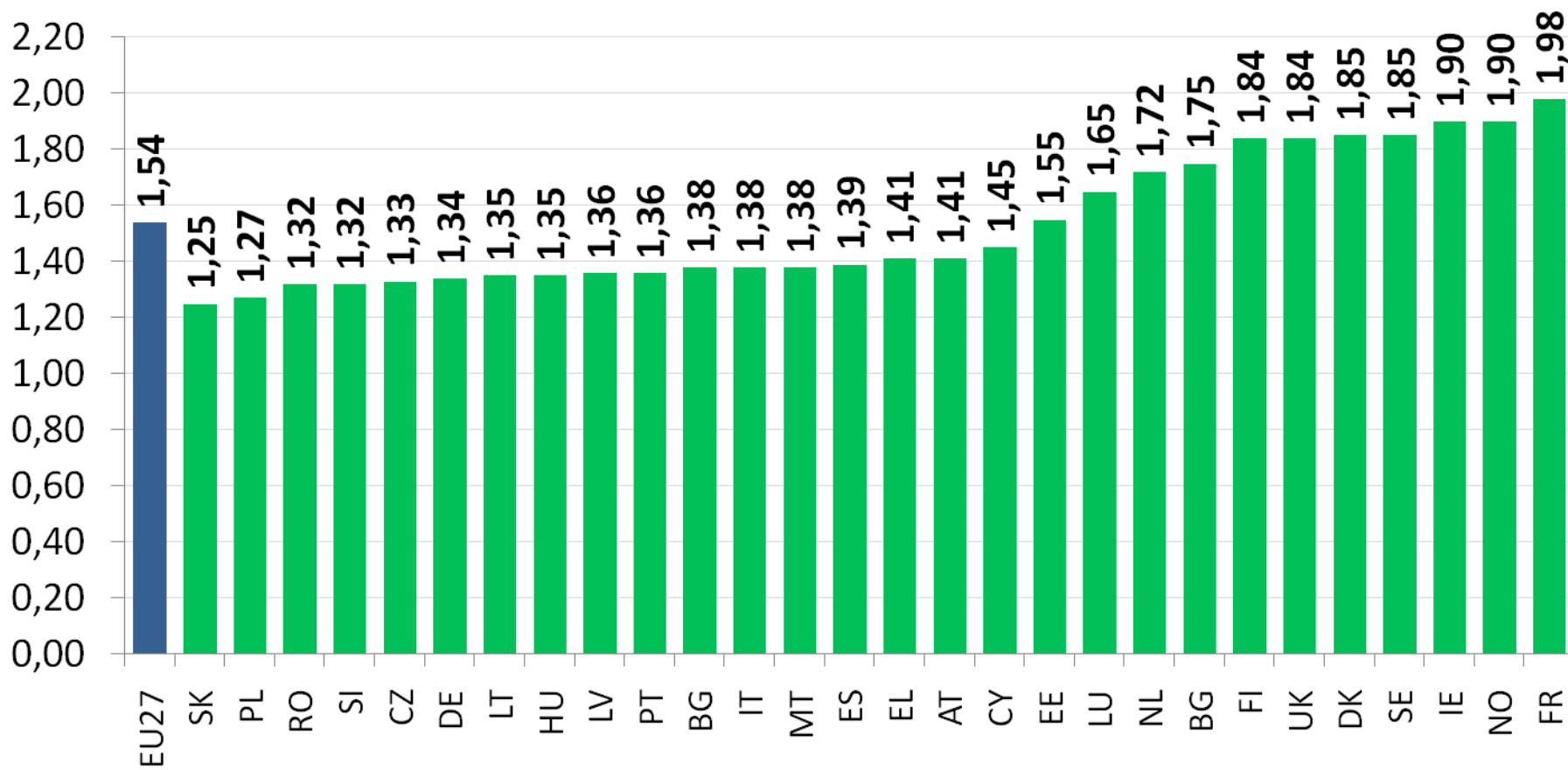
Total change in EU-27: 1,3 % (+6,3 million),
but large variations among MSs



Population change (million) in the EU in each decade between 2010 and 2060: decline starts in the 2040 decade

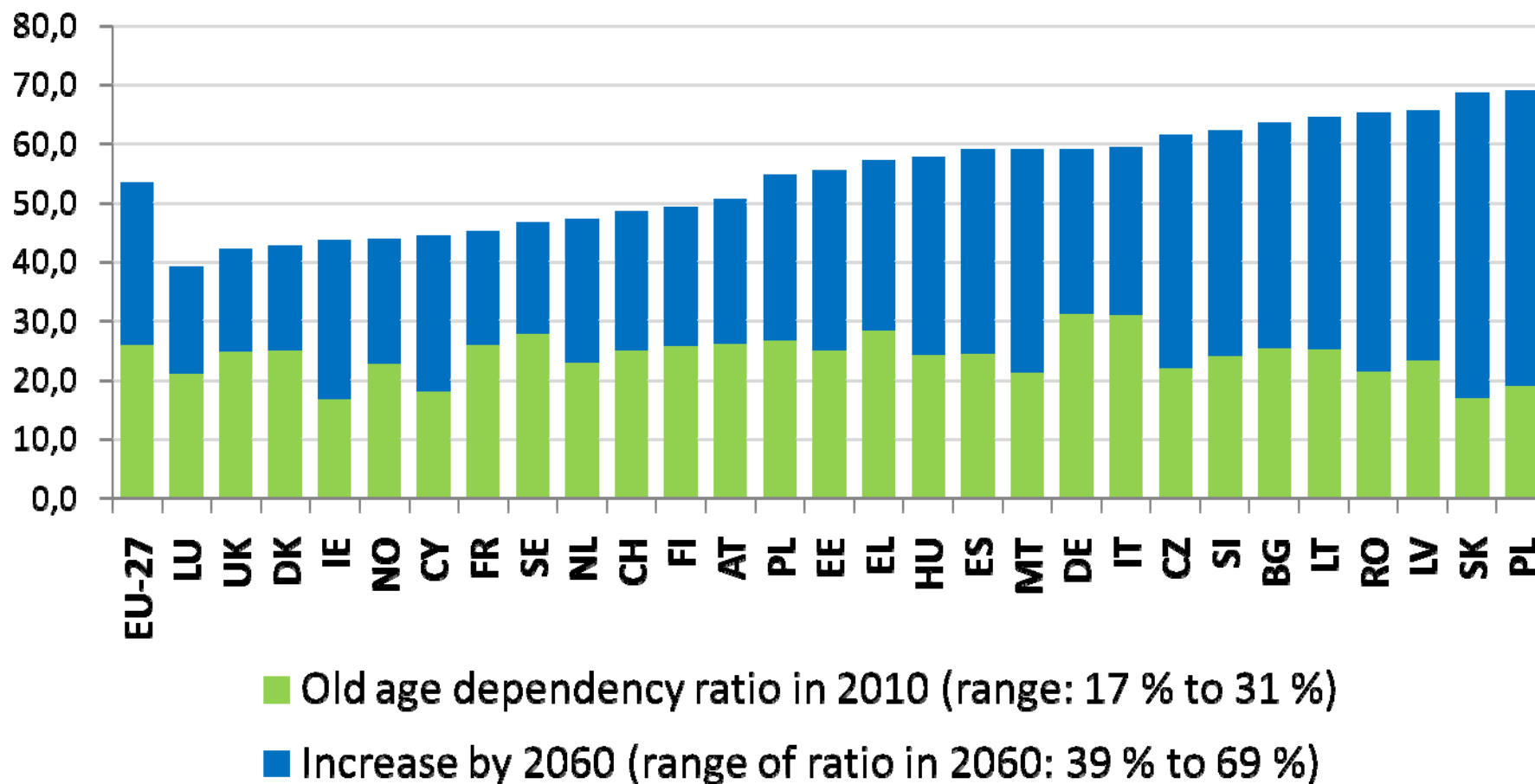


Total Fertility Rate, EU, 2008



Old age dependency ratios, EU, 2010, 2060

(population aged 65+/population aged 15-64)



Families want more children

Planned family size is lower than the final number of children in almost all countries of Europe

Achieving the planned family size would result in fertility rates that are close to the level needed for the reproduction of parental generations in many European countries

Policies

Adaptation policies

- policies that adapt existing services or circumstances to the population trends

Enabling policies

- policies that lift barriers which prevent families from fulfilling their family plans

Adaptation policies (examples)

Current policies are mostly adaptation policies – all of them justified and effective for a while

- we try to adapt our pension systems to the ageing trends
- we design immigration policies that attract immigrants to compensate for the decline in working age population, and help the integration of immigrants through various policies,
- we design active ageing policies
- we implement health policies that respond to the needs of the fast growing old population
- etc., etc.

Enabling policies: Rationale

While it is unlikely that the total number of planned or desired children could be born in a population, even narrowing the gap would slow down both population decline and ageing

Decisions concerning the number and spacing of children belongs to the private domain, but enabling those families who cannot reach their desired family size to have as many children as they plan, benefits the entire community

Family and childbearing is among the inherent values of the political community represented by

Enabling policies: need for a complex approach

The decisions concerning the actual number of children in a family are influenced by a variety of factors, e.g.

- labour market participation,
- child care,
- housing,
- income,
- attitude of the smaller or larger community,
- availability of assistance in case of family crisis
- etc., etc.

The policies that enable families to have as many children as they plan need to be as complex as the

Enabling policies: Examples

Reconciling work and family life

- currently women in most countries are likely to lose in both battlefields: they cannot have as many children as they would like and they face disadvantages in the labour market
- several studies show that this is the main obstacle to having more children

family friendly work places

legislation concerning parental leave, sick leave,

accessible and affordable child care facilities

housing policies

family friendly physical environment

counselling services

Thank you for your attention!